

F1 FULLY AUTOMATIC CUP SEALER ERROR SOLUTIONS GUIDE

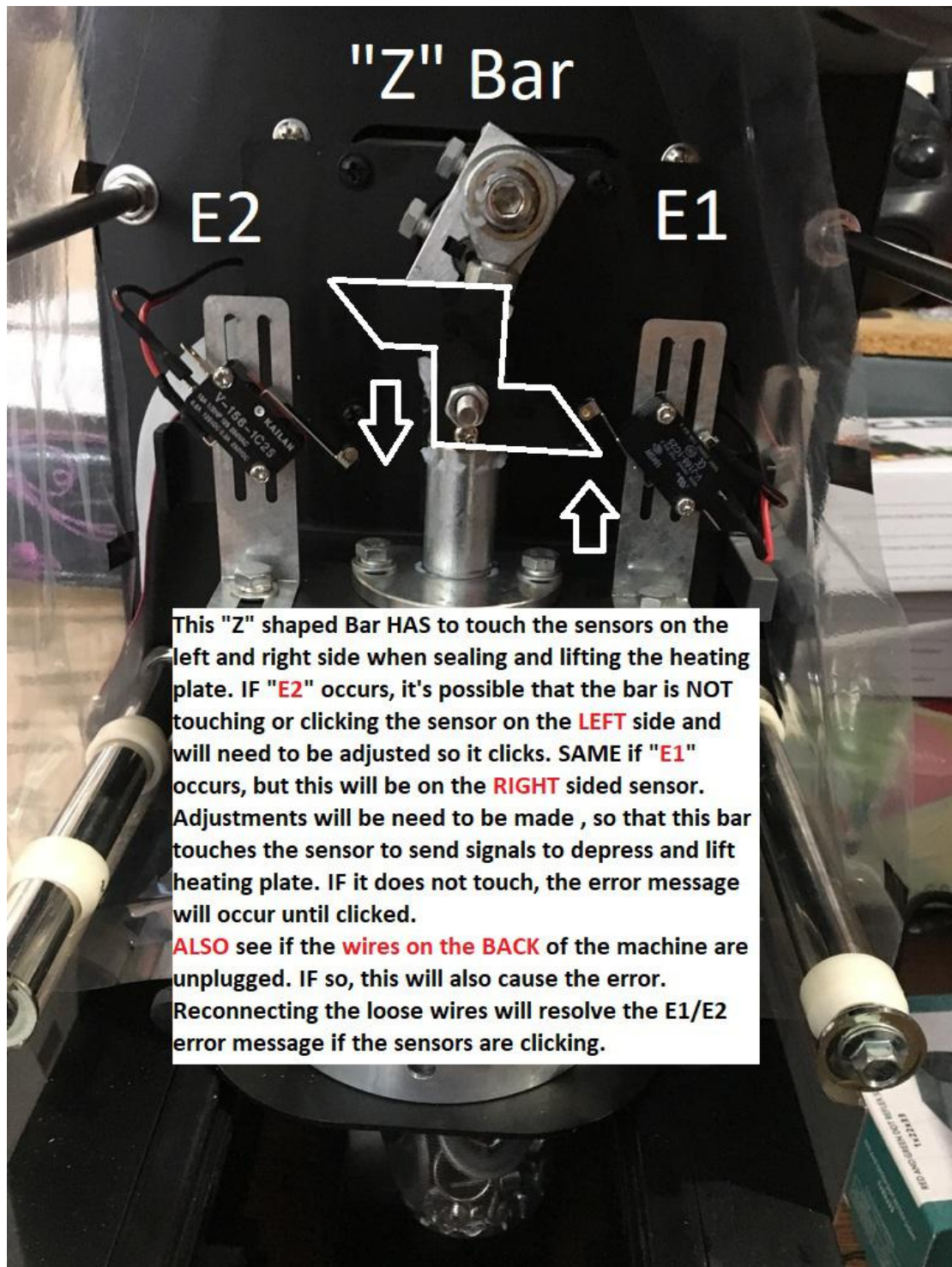
*******MAKE SURE MACHINE IS UNPLUGGED FOR ALL TROUBLE-SHOOTING *******

<i>Error Codes</i>	<i>Picture</i>	<i>Description</i>	<i>Solution</i>
E51/E52	Figure 5.1 Figure 5.2	Laser Sensor cannot detect the film marker (Film is not matching sensor)	<ul style="list-style-type: none"> - Check if the sealing film crossed the tracking switch or not -Clear the dust building up on the laser beam -Adjust the sensitivity of the tracking switch (Rotate screw in sensor to alter film feeding gap) (Clockwise = Tighten Gap) (Counter Clockwise = Loosen Gap)
E01	Figure 1.1 Figure 1.2 (same as E02, but on the right side instead of the left side)	Right Side Front Panel Sensor Error	<p>-SEE IF ANY WIRES UNPLUGGED IN BACK (if so, reconnect wires for simplest solution)</p> <p>- The RIGHT side sensor of the machine is not being depressed (clicked) down by the “Z” shaped bar. The machine is unable to send a signal to lower the heat plate. Adjust sensor, so it is in a position where the “Z” shaped bar</p>
E02	Figure 1.1 Figure 1.2 (same as E01, but on the left side instead of the right side)	Left Side Front Panel Sensor Error	<p>-SEE IF ANY WIRES UNPLUGGED IN BACK (if so, reconnect wires for simplest solution)</p> <p>The LEFT side sensor of the machine is not being depressed (clicked) down by the “Z” shaped bar. The machine is unable to send a message to lower the heat plate. Move the sensor DOWN, so it is in a position where the “Z” shaped bar can click that right sided (upper) sensor. See figure . (RELATES TO E06)</p>

E03	Figure 2.1 Figure 2.2	Back Sensor Error (Cup will not come out BEFORE sealing cup)	- SEE IF ANY WIRES UNPLUGGED IN BACK Sensor on the lower back end dictates the cup tray from coming in and out of the machine. It is clicked when the cup tray goes inside the machine. IF “E3” error occurs, it is not being clicked and needs to be adjusted.
E04	Figure 2.1 Figure 2.3	Back Sensor Error (Cup will not come out AFTER sealing cup)	- SEE IF ANY WIRES UNPLUGGED IN BACK Sensor on the lower front end (back of machine and not front control panel) dictates the cup tray from coming in and out of the machine. It is clicked when the cup tray goes outside the machine. IF “E4” error occurs, it is not being clicked and needs to be adjusted. E4 can only be adjusted horizontally and will be clicked by a metal protrusion but on the tray’s arm.
Cup Not Entering Machine (Hand Guard Rail) Full Auto Function (off)		Placing cup in tray and does not automatically enter cup.	-There are a number of reasons why the machine may not automatically accept the cup once it is placed in the machine . 1. The HAND GAURD RAIL is pressed in. If the hand guard rail is pressed in, the tray will not enter the machine even after a cup is placed triggering the auto function sensor. This is meant to protect your hand from the sealing tray from coming in and out. 2.
E06	Figure 7.1	Left Side Upper Sensor Error	The Left side sensor of the machine is not being depressed (clicked) down by the “Z” shaped bar. The machine is unable to send a message to raise the heat plate. Move the sensor UP, so it is in a position where the “Z” shaped bar can click that left sided upper sensor. See figure . (RELATES TO E02)

E07		Hand Guard Not In Safe Mode	The bottom rail has a guard that protects your hand from the heat plate. If the error occurs, lift the rail towards you to unclick the sensor to set it back to safe mode. This will fix the error code. It is more of a warning noise than an error.
E08	Figure 9.1	Front Control Panel Loose Wire	Remove the screws from the front panel of the machine and see if a wire is loose/disconnected. Reconnect the wire to resolve the error. IF wire is connected and error still occurs, the backside where this wire connects to the control panel is loose. Trace the wire to the back of the machine to find the loose plug. Reconnect that wire to fix this error.

Figure 1.1



This "Z" shaped Bar HAS to touch the sensors on the left and right side when sealing and lifting the heating plate. IF "E2" occurs, it's possible that the bar is NOT touching or clicking the sensor on the **LEFT** side and will need to be adjusted so it clicks. SAME if "E1" occurs, but this will be on the **RIGHT** sided sensor. Adjustments will be need to be made , so that this bar touches the sensor to send signals to depress and lift heating plate. IF it does not touch, the error message will occur until clicked.

ALSO see if the **wires on the BACK** of the machine are unplugged. IF so, this will also cause the error. Reconnecting the loose wires will resolve the E1/E2 error message if the sensors are clicking.

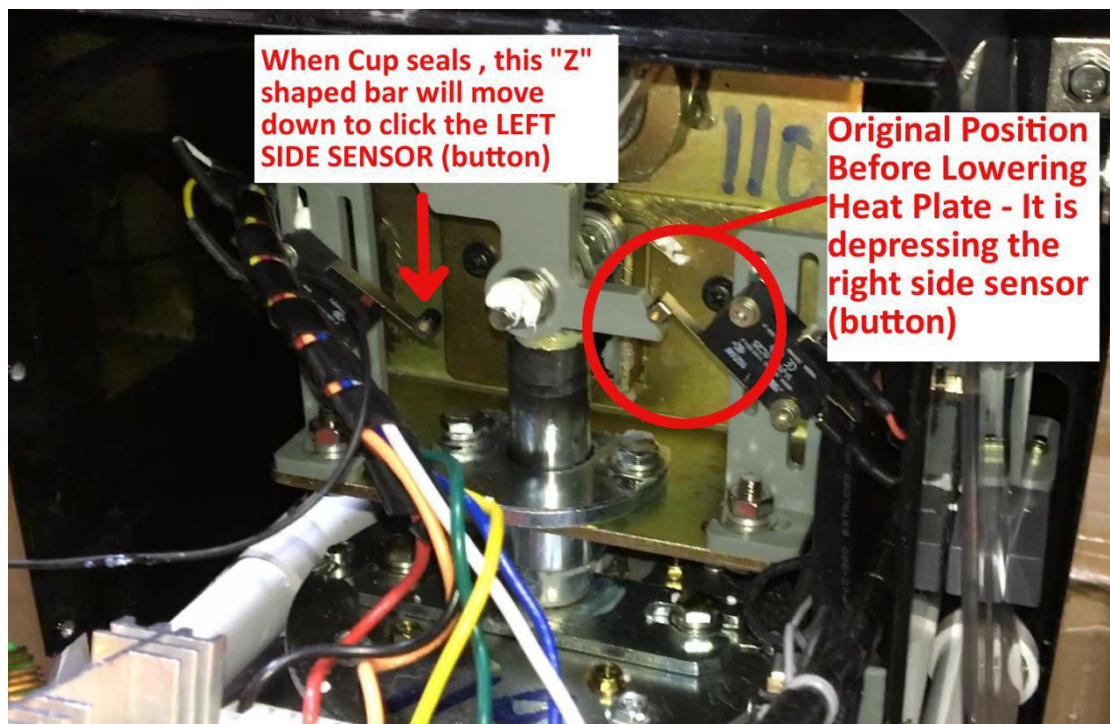
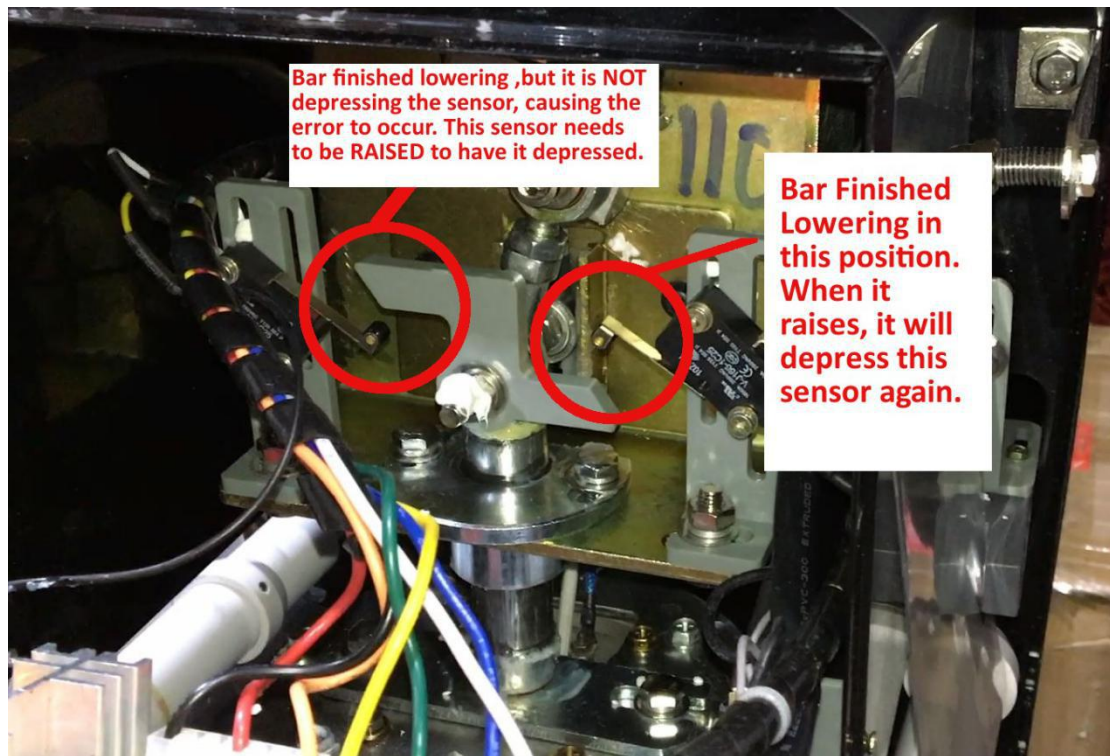
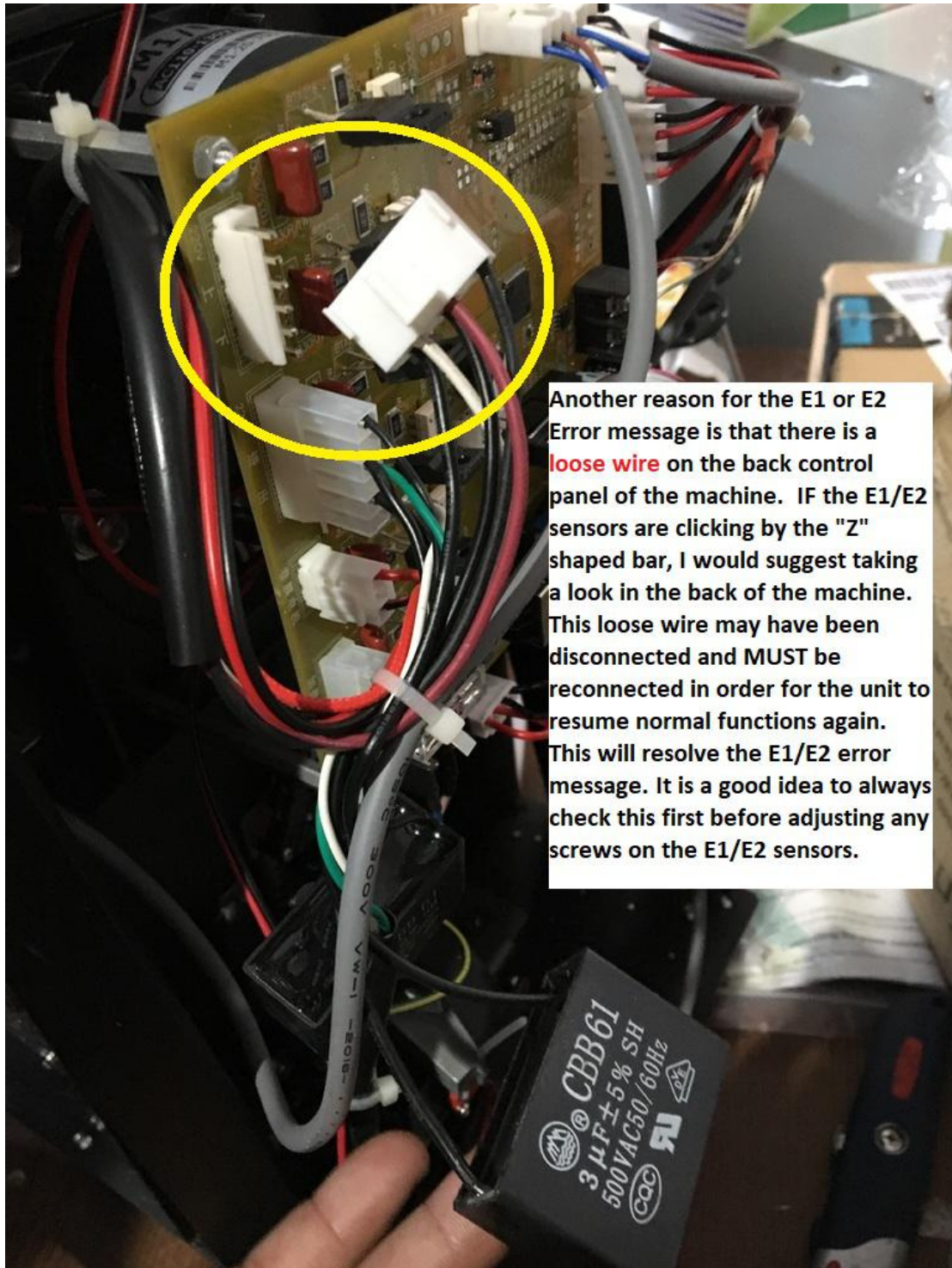


Figure 1.2



Another reason for the E1 or E2 Error message is that there is a **loose wire** on the back control panel of the machine. IF the E1/E2 sensors are clicking by the "Z" shaped bar, I would suggest taking a look in the back of the machine. This loose wire may have been disconnected and **MUST** be reconnected in order for the unit to resume normal functions again. This will resolve the E1/E2 error message. It is a good idea to always check this first before adjusting any screws on the E1/E2 sensors.

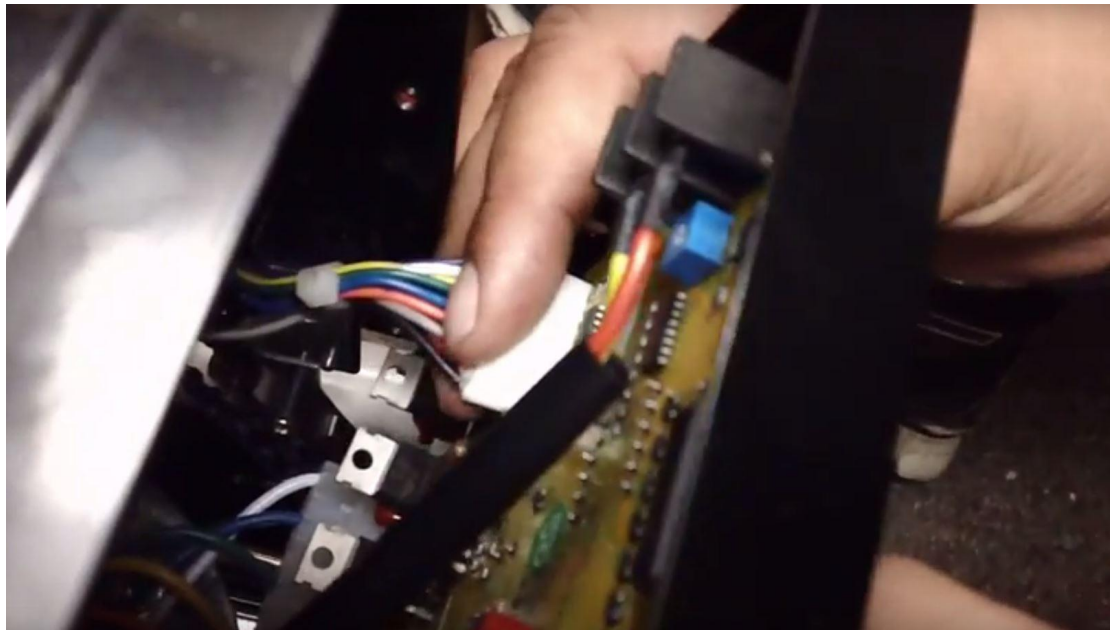


Figure 2.1

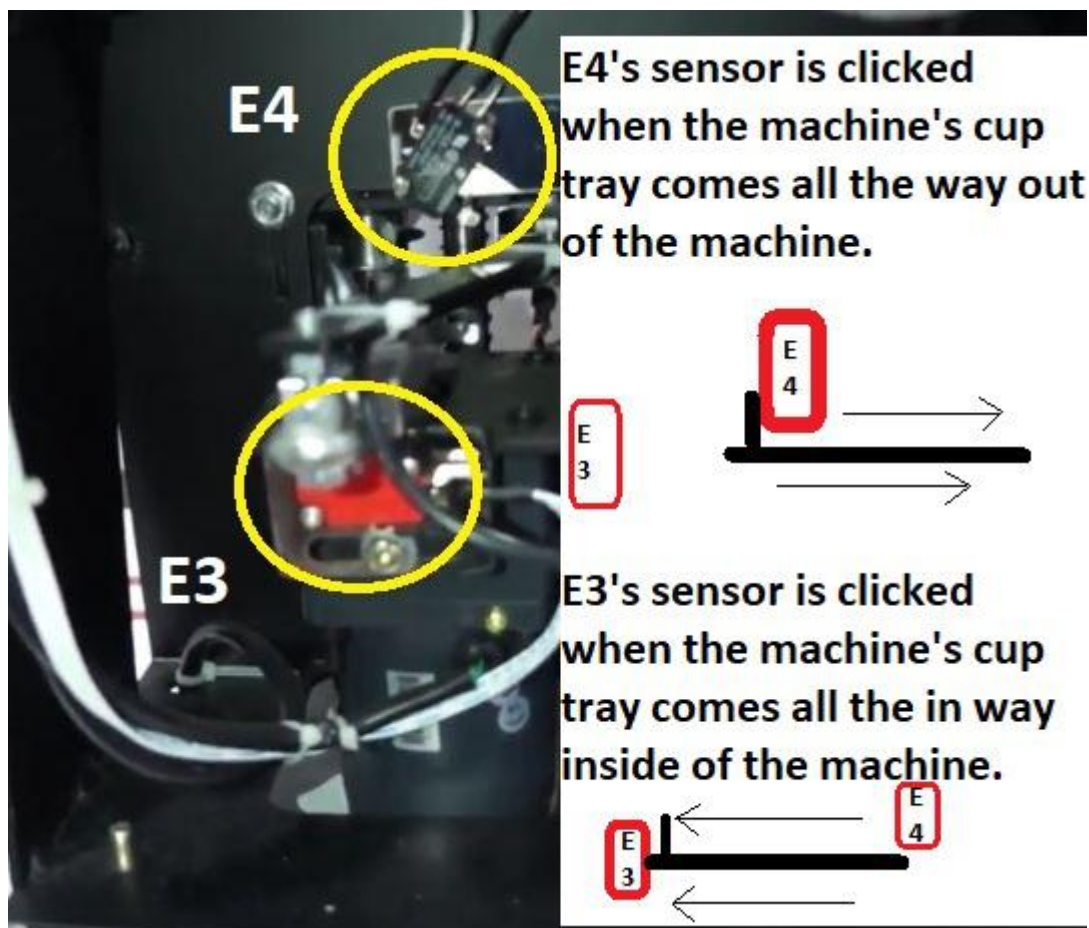


Figure 2.2

The sensor protruding in the back of the machine dictates the machine's cup tray from coming in and out. This sensor is not being clicked, thus causing the cup tray to stay inside. If sensor is being depressed, You can also reset the sensor by clicking it continuously for 30x times. Also try to remove the wires in the sensor and re-install them back onto the sensor.

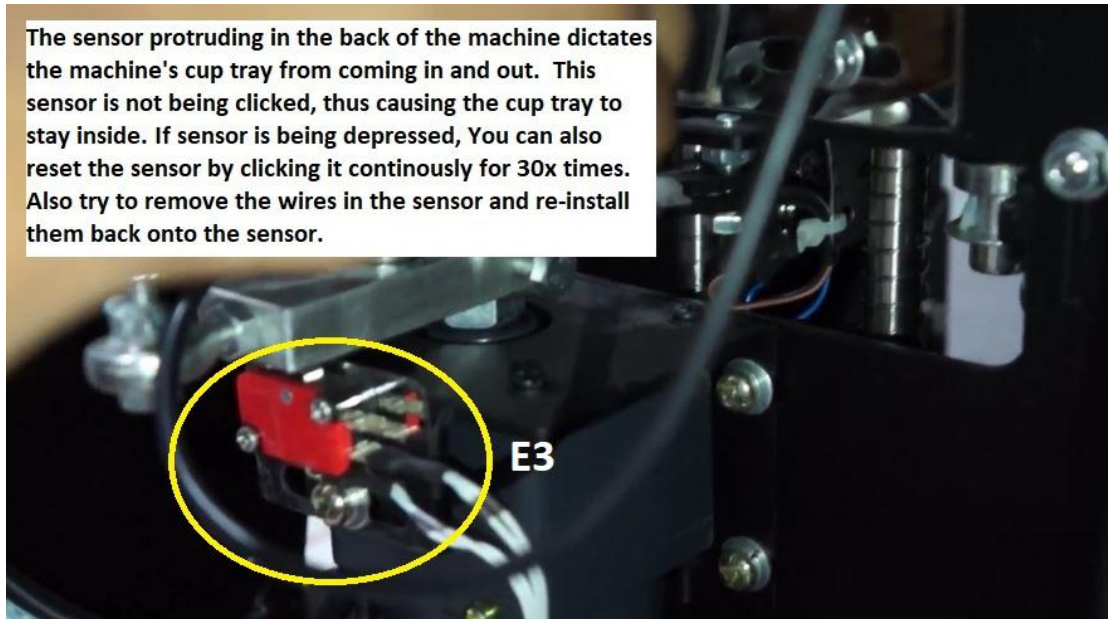


Figure 2.3

E4's sensor will be clicked when the cup tray comes out of the machine. Once the tray comes all the way out, E4 will be depressed. E4 error will occur if the sensor is not being clicked. You will need to re-align the sensor as they are adjusted in a X-axis. If sensor is being clicked, and error still occurs, you can try to reset the sensor by clicking it continuously for 30x times. Also try to remove the wires in the sensor and re-install them back on to the sensor.

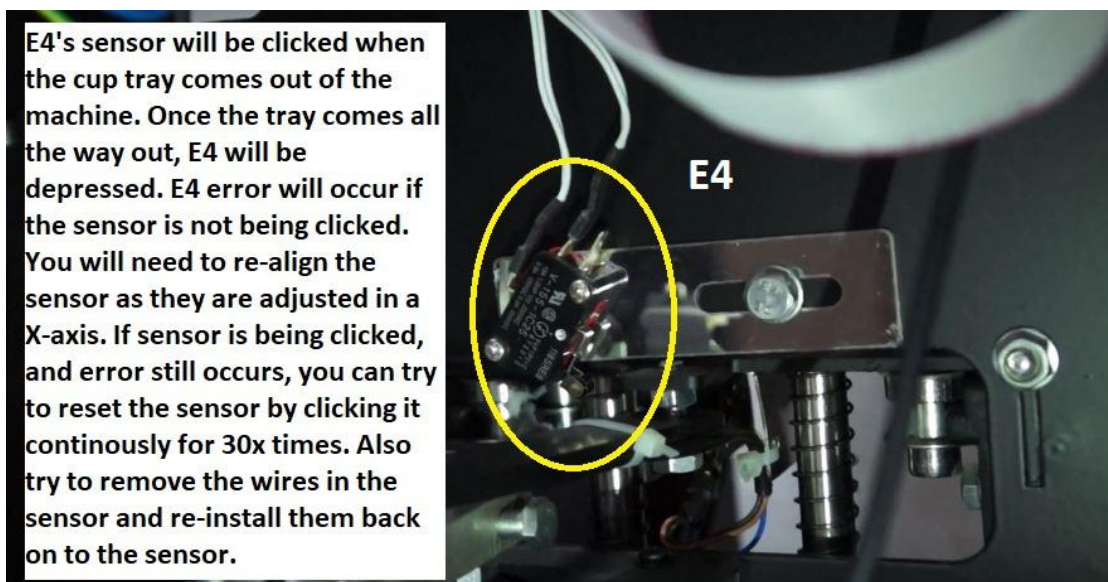


Figure 7.1

Figure 7.2

Figure
5.1

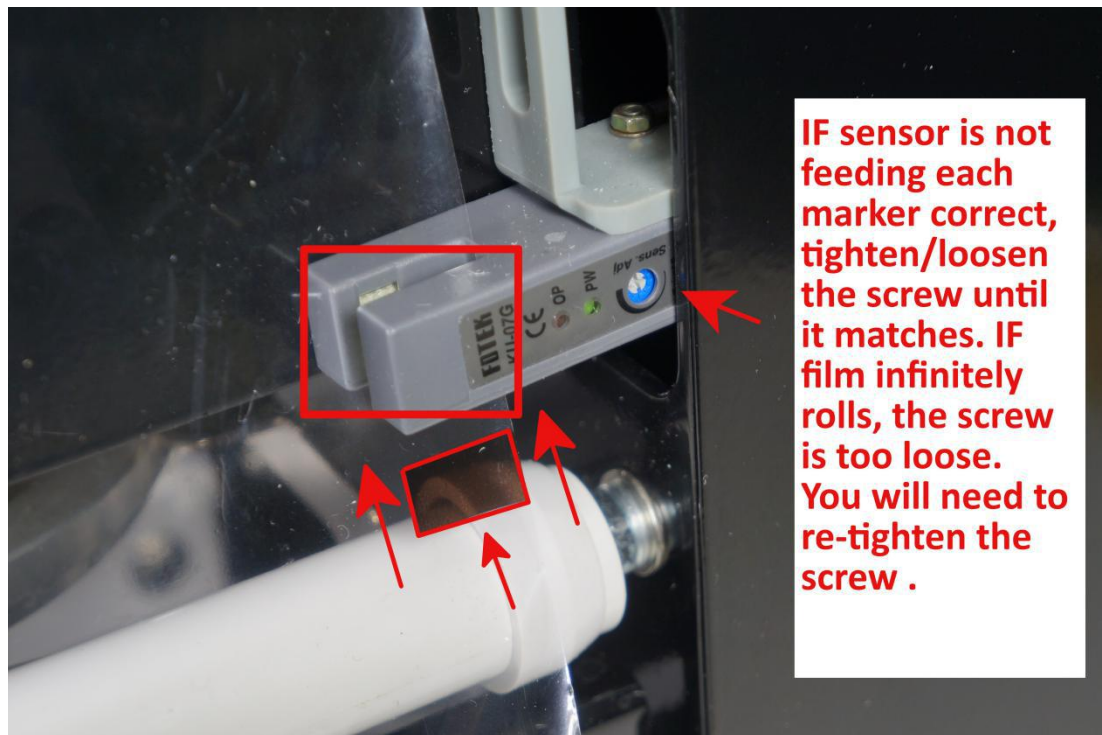


Figure 5.2



Figure 9.1

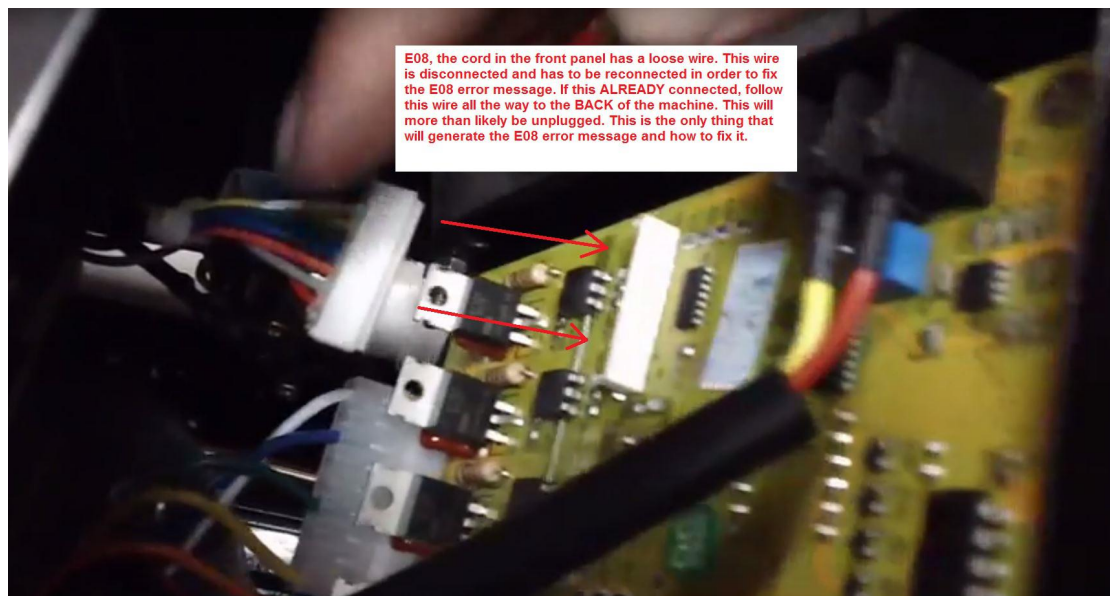


Figure 9.2

F1 Fully Automatic Cup Sealing Machine Error Messages :

E02 is the same as Black Fully Automatic Cup Sealer Machine.

Motor controlling switch is not touching correctly.

E52 Black film is not matching inside the sensor box of the machine.

Couldn't touch the black sensor .

The film marker (black square) is not matching the film sensor on the right side of the machine . Make sure the film's black square matches the sensor in the machine. A red light will indicate that it matches. Using the mini screwdriver will allow you to offset how much film is feeding into the next marker. Tighten/loose the screw to change the height of the next black marker. (If screw is too loose, film will constantly feed and never end.)