

FULLY AUTOMATIC CUP SEALER ERROR SOLUTIONS GUIDE

*******MAKE SURE MACHINE IS UNPLUGGED FOR ALL TROUBLE-SHOOTING *******

<i>Error Codes</i>	<i>Picture</i>	<i>Description</i>	<i>Solution</i>
E00		Temperature Sensor Error	
E01		Heat Plate or Wire Error	
E02	Figure 7.1 (same as E06, but on the right side instead of the left side)	Right Side Upper Sensor Error	The Right side sensor of the machine is not being depressed (clicked) down by the “Z” shaped bar. The machine is unable to send a message to lower the heat plate. Move the sensor DOWN, so it is in a position where the “Z” shaped bar can click that right sided (upper) sensor. See figure . (RELATES TO E06)
E03		Right Side Lower Sensor Error	Sensor on the lower end dictates the cup tray from coming in and out of the machine. See Figure . Cup Tray does NOT go back in .

E04	Figure 5.1	Film Marker Not Matching Sensor	The film marker (black square) is not matching the film sensor on the right side of the machine . Make sure the film's black square matches the sensor in the machine. A red light will indicate that it matches. Using the mini screwdriver will allow you to offset how much film is feeding into the next marker. Tighten/loose the screw to change the height of the next black marker. (If screw is too loose, film will constantly feed and never end.)
E05		Left Side Lower Sensor Error	Sensor on the lower end dictates the cup tray from coming in and out of the machine. See Figure .
E06	Figure 7.1	Left Side Upper Sensor Error	The Left side sensor of the machine is not being depressed (clicked) down by the "Z" shaped bar. The machine is unable to send a message to raise the heat plate. Move the sensor UP, so it is in a position where the "Z" shaped bar can click that left sided upper sensor. See figure . (RELATES TO E02)
E07		Hand Guard Not In Safe Mode	The bottom rail has a guard that protects your hand from the heat plate. If the error occurs, lift the rail towards you to unclick the sensor to set it back to safe mode. This will fix the error code. It is more of a warning noise than an error.
E08	Figure 9.1	Front Control Panel Loose Wire	Remove the screws from the front panel of the machine and see if a wire is loose/disconnected. Reconnect the wire to resolve the error. IF wire is connected and error still occurs, the backside where this wire connects to the control panel is loose. Trace the wire to the back of the machine to find the loose plug. Reconnect that wire to fix this error.

Figure 7.1

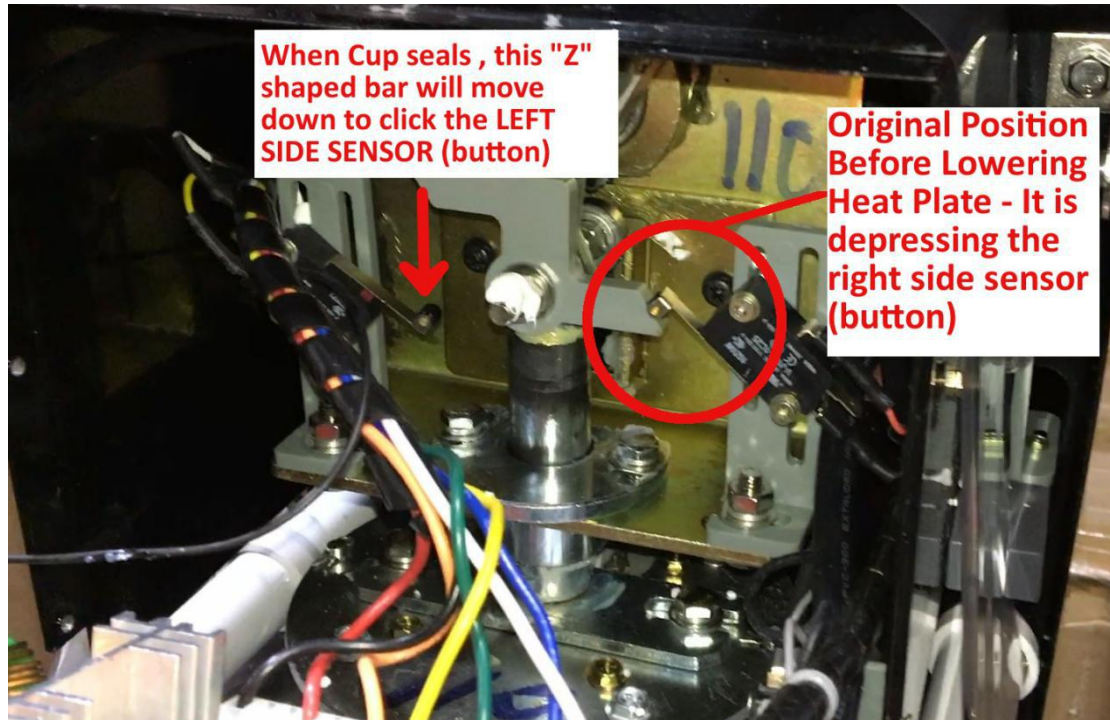


Figure 7.2

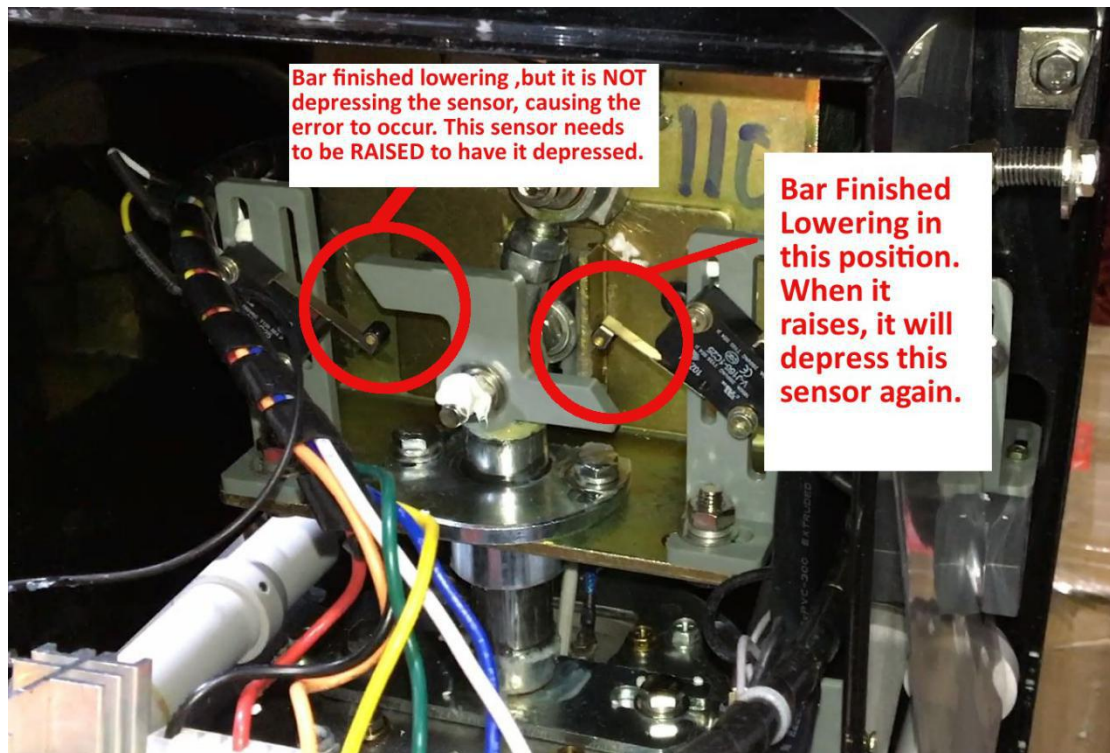


Figure
5.1

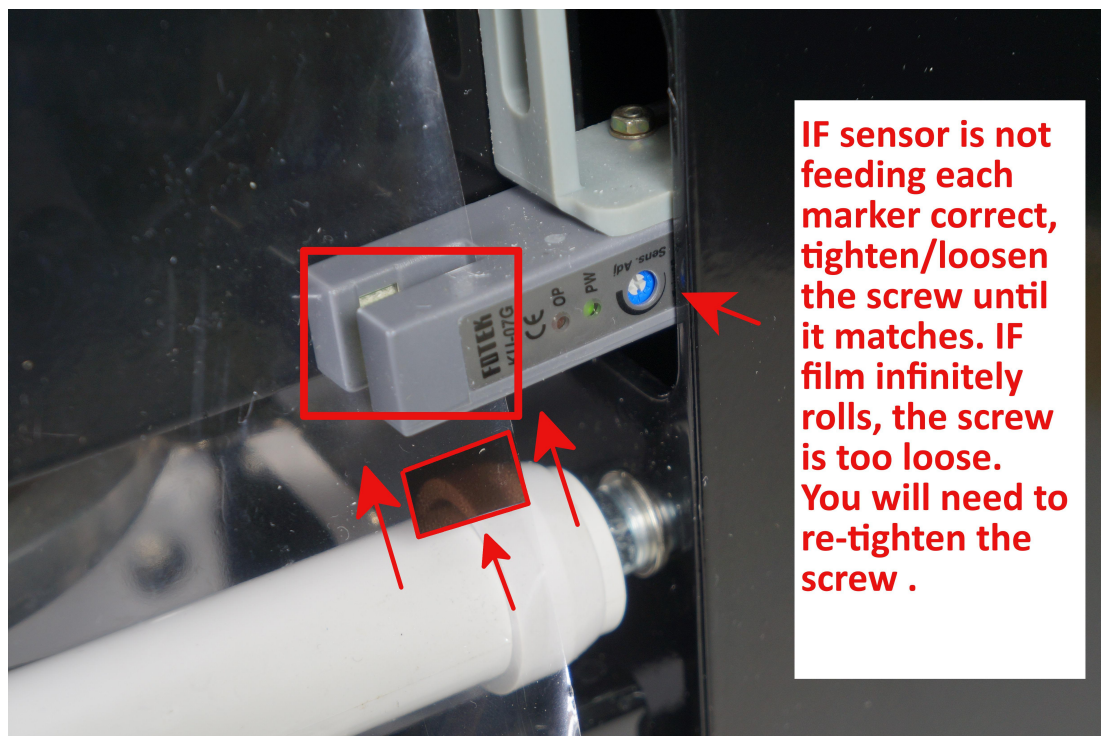


Figure 5.2



Figure 9.1

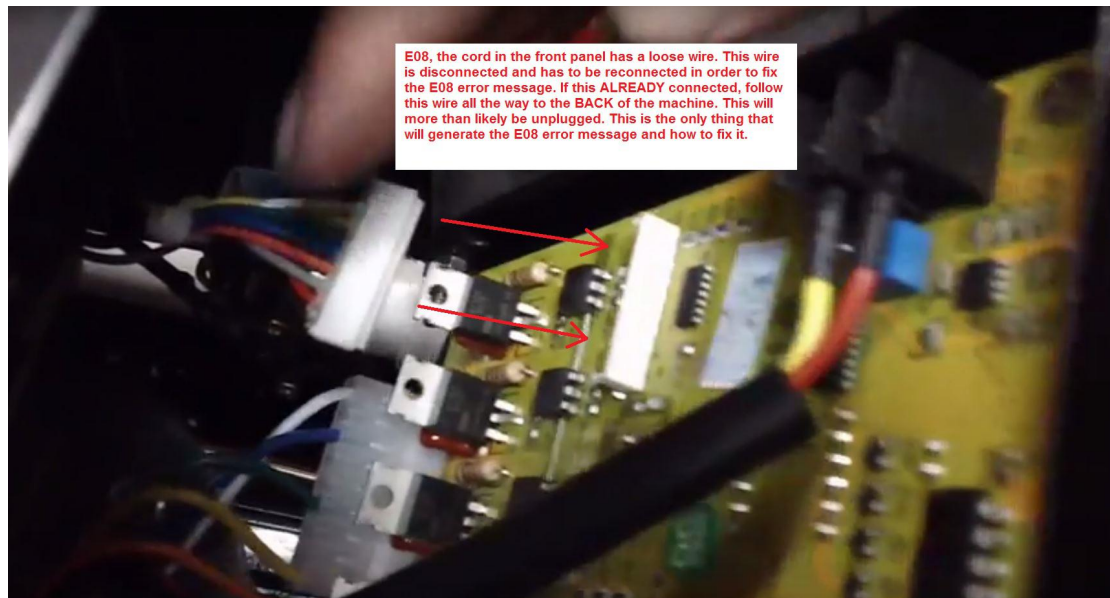
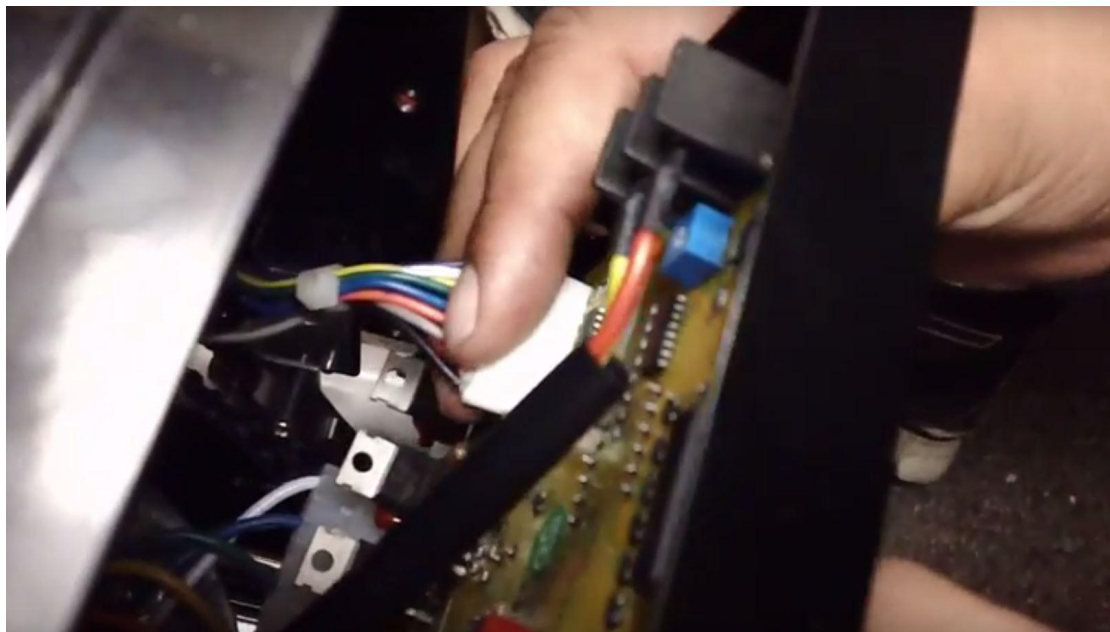


Figure 9.2



F1 Fully Automatic Cup Sealing Machine Error Messages :

E02 is the same as Black Fully Automatic Cup Sealer Machine.

Motor controlling switch is not touching correctly.

E52 Black film is not matching inside the sensor box of the machine.

Couldn't touch the black sensor .