

Malfunction: **Temperature 1023**

Reason:

- A. Sensor of heating fault;
- B. Connecting terminal connected in Wrong way or Loosen.

Solution:

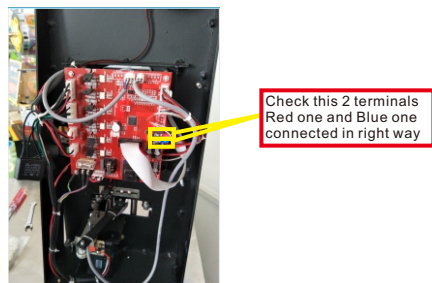
- A. Check the connection terminal.

#1 Step : Plug out.

#2Step : Remove the 4 screws to Take off the back cover.



#2Step : Checking if the temperature connection terminal is in right way.
The right connection way must be same as following picture.
The red wire is up and the blue one is down.
If the wire is not in right way,pls correct them.



4#Step:
If this 2 connecting terminal is in right way and don't loosen.
Should start to change a new Temperature sensor.

5#Step:
Plug out
Change a new temperature sensor.

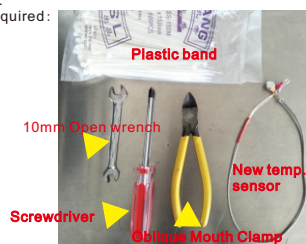
Solution:

- B. Change a new temperature sensor

If Checked this 2 connecting terminal is in right way and don't loosen.
Should start to change a new Temperature sensor.

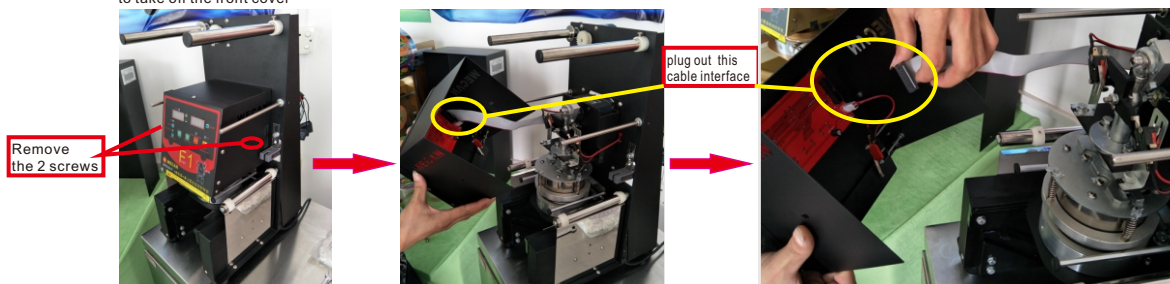
1#Step:

tools required :

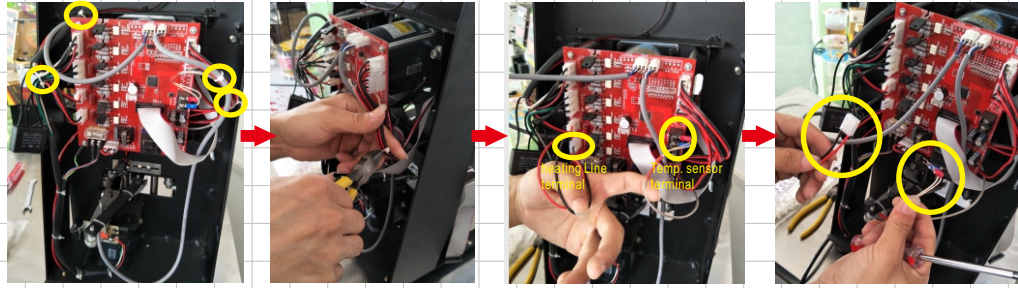


2#Step:

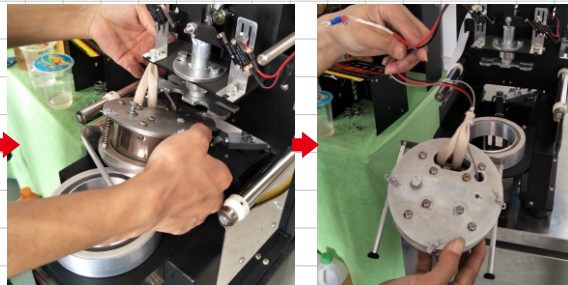
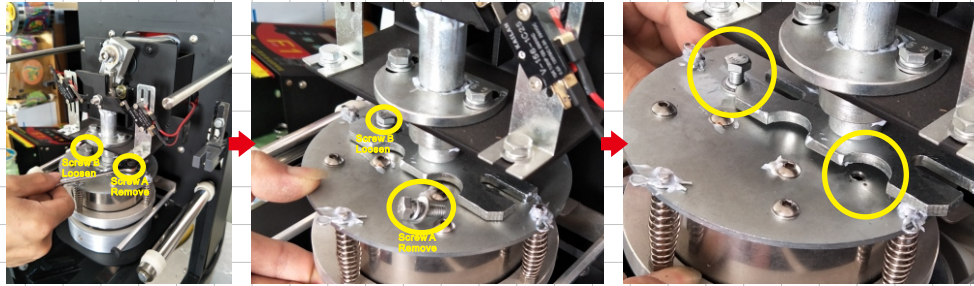
Plug out the machine
then remove the 2 screws , plug out the cable interface ,
to take off the front cover



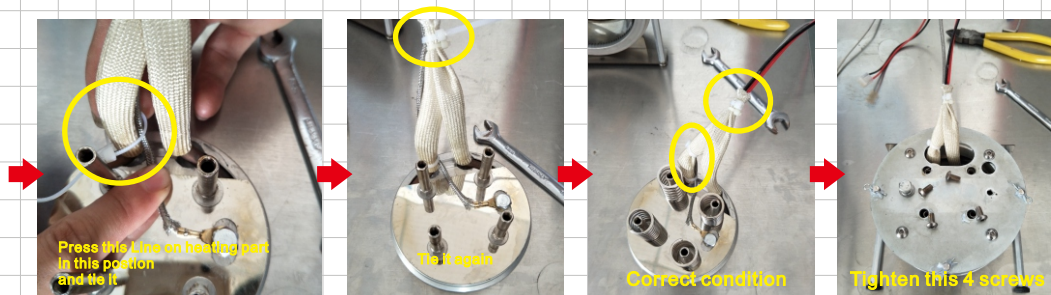
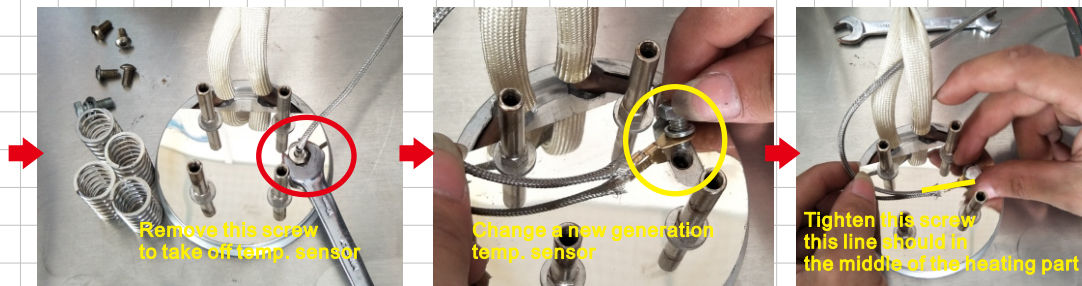
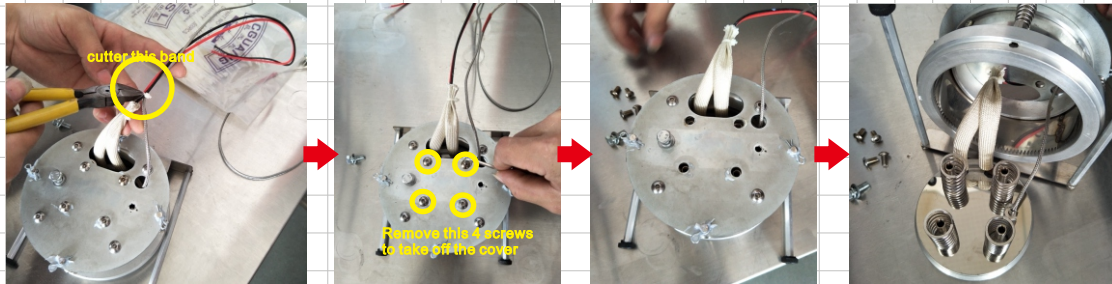
3#Step:
Cut off plastic band on the temp. sensor and wires.
then loosen the 2 screws to take off temp. sensor terminals.
plug out heating line terminal.

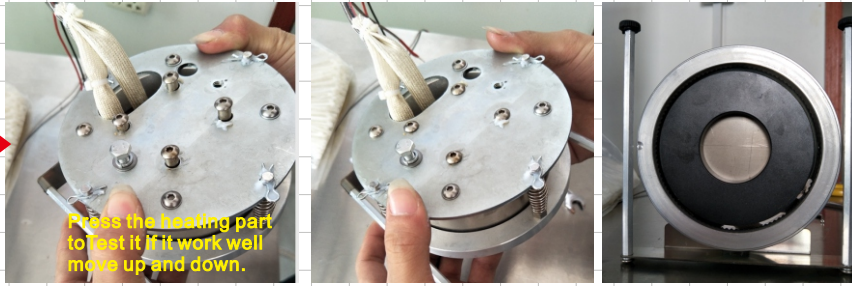


4#Step:
Use 10mm open wrench to loosen the right screw A and loosen the left screw B.
And take off the heating and cutter group as following.

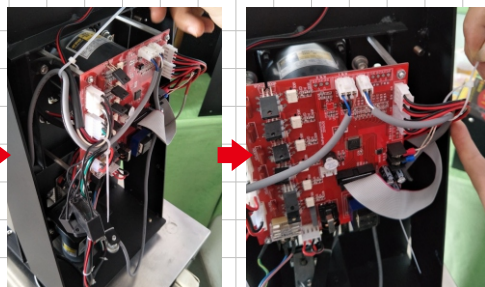
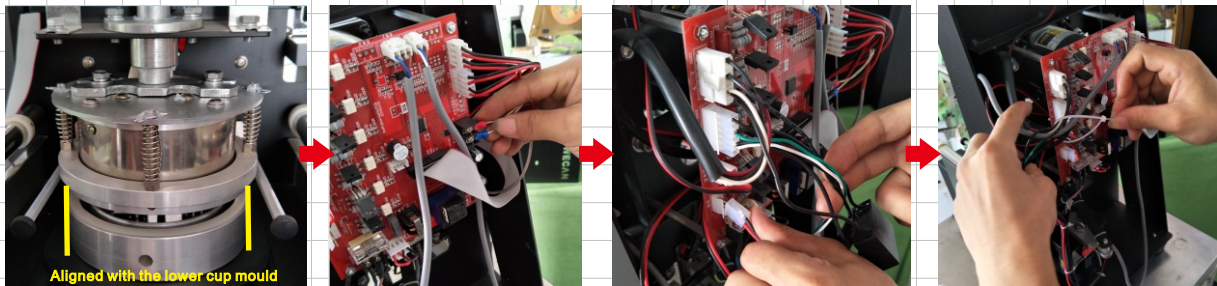
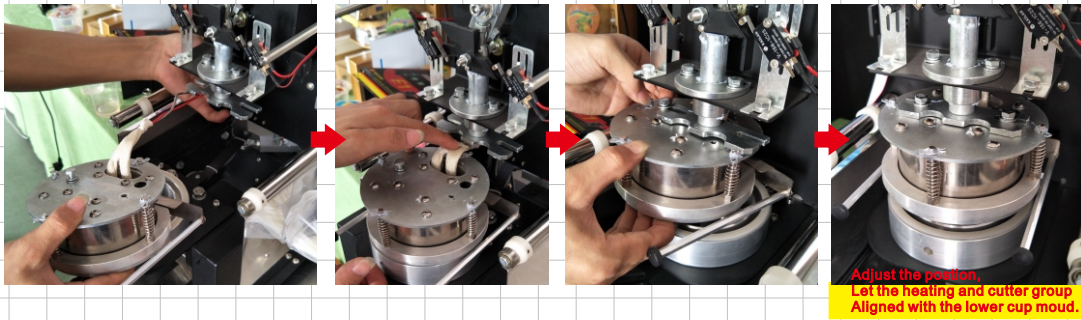


5#Step:
Take off Temp. sensor from heating part,
then change a new one.





6#Step:
Install the heating and cutter group,
and restore the lines.



7#Step:
Install the front cover
then Plug in

