



UVC CLARIFYING MANUAL

CUV-318/324/336 CUV-515/528/540

CUV-618/624/636/655/672/695/6110

Please read the operating instructions and familiarize yourself with the device before placing it in service. Correct and safe use of the system requires strict compliance with the safety instructions.



PROLEGOMENA

Ensure that all work with this unit is only carried out in accordance with these instructions. Adhere to the safety information for the correct and safe use of the unit. Keep these instructions in a safe place! Please also hand over the instructions when passing the unit on to a new owner.

The company GRECH has built this unit according to the state of the art and the valid safety regulations. Despite the above, hazards for persons and assets can emanate from this unit if it is used in an improper manner or not in accordance with its intended use, or if the safety instructions are ignored. For safety reasons, children and young persons under 16 years of age as well as persons who cannot recognise possible danger or who are not familiar with these operating instructions, are not permitted to use the unit. Keep children under supervision to ensure that they do not play with the unit.

CAUTION

1. The UVC filter should be placed somewhere that the water will not submerge it, and it should be 2 meters distance from the edge of the pond to the filter. This equipment can not be used under the water.
2. Before the water circulation, the electrical source of the UVC filter can not be switched on.
3. Please place the UVC in the steady and safe spot, because the UV light tube is made of quartz glass which is easy to broken.
4. Before all parts are installed completely, the electrical source can not switch on.
5. If the UV light tube or the body shell looks like broken, the equipment can not be used.
6. When any person in the water, the UVC can not be used.
7. Please make sure that the electrical voltage, frequency used are consistent with the indication on the scutcheon the UVC filter.
8. When installing the equipment, the installation regulation of domestic should be followed.
9. Pull the connecting cable is forbidden. And please protect the connecting cable from heat, greasiness or sharpness.
10. Make sure the max pressure of the body shell ensured is less than 1.0 bar.
11. When know the frost is coming, please move away UV filter.
12. When install the UV filter, please not let it under the sunlight directly.
13. The dirtiness on the quartz tube will influence the effect of the equipment, please clean the quartz tube in time.
14. In order to ensure the effect of the equipment, the UV light tube should be replaced after 8000 hours' usage.
15. When the body shell is blocked with the sands rubbish, it may destroy the quartz tube. So please add the filter sponge in the inlet of the water pump.
16. UVC is harmful to the eyes and skin. Please do not watch UVC directly or let the skin approach to UVC.
17. When install or repair this equipment, the electrical source of the aquarium must be switched off.
18. The product must be installed horizontally and with the feet down. Other installation positions are prohibited for safety reason.
19. The UVC lamp installed in the unit is intended to kill algae and bacteria in the pond water. Even in small doses, its radiation is harmful for eyes and skin.
20. Never use the UVC lamp in a defective housing or outside the housing, or any other purpose other than that intended. The following restrictions apply to the unit:
 - Never use the unit to convey fluids to other than water.
 - Never run the unit without water.
 - Do not use for commercial or industrial purposes.
 - Do not use in conjunction with chemicals, foodstuff, easily flammable or explosive substances.

INSTRUCTION

1. This equipment can kill the harmful germ and algae in the aquarium and the pond which offer the healthy environment to the fishes.
2. When the water under the irradiation of wavelength in 253.7nm's ultraviolet radiation in a short period, the germ and pathogen in the water will be killed then.
3. This equipment is not sell with the pump, please buy it yourself.
4. Please connect the inlet pipe with the outlet of the water pump.
5. Please connect the outlet pipe with the other filter or the pond and fix it. After the inspection of the pipe and connecting part, the water circulation can be started then.
6. Please check it when the water started circulation or not after several minutes.
7. Turning on electrical source, the UV filter begin to work.
8. The detailed sketch map of usage can be found in the packing box.

Installation and connection**Installation location (PIC A)**

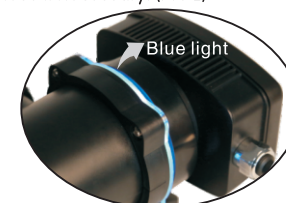
- This device can only be worked under the protection of the cover. It should be placed in somewhere that water will not submerge it, and it should be installed 2 meters away from water.

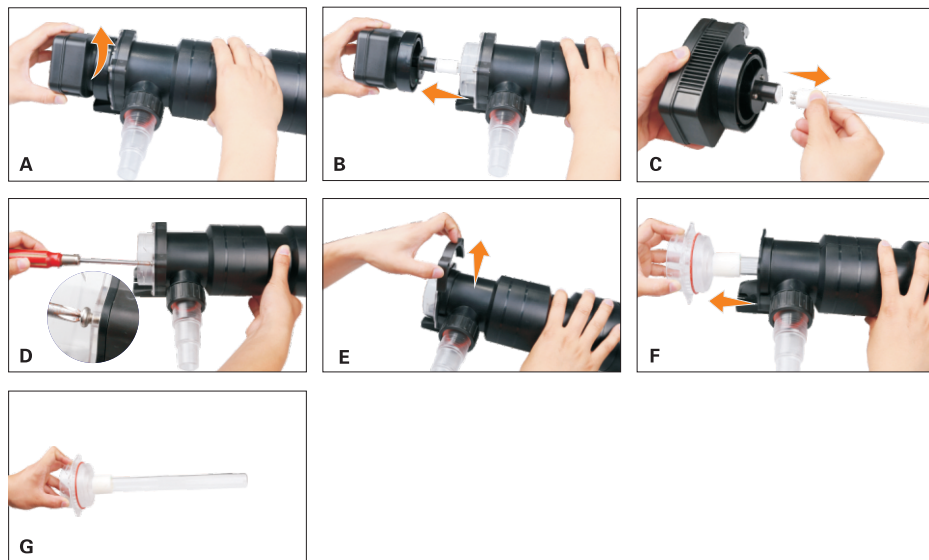
Connection (PIC B–E)

- We would suggest choosing a hose that can have pressure of 1.0 bar.
- Cut off the multi-stage hose tail according to the diameter of the hose. (PIC B)
- Connect the multi-stage hose tail to the inlet or outlet, and fix with hose clip. (PIC C)
- Put O-ring into the screw and connect to the device. (PIC D)
- You can change the two inlet checking windows to water supply hose if necessary. (PIC E)

★ **Important: Connect the water pumps first, and then connect the UV device. Do not run the device without water. This device will be automatically turned on after the power on.**

- The device is working if the blue light is turned on.



CLEAN, MAINTAIN AND CHANGE

- ★ **Because of the life of the UV light, the light tube should be replaced after 8,000 hours use.**
- Turn the head according to the direction of arrow .(PIC A)
 - Take out the head according to the direction of arrow .(PIC B)
 - Take out the UV lamp according to the direction of arrow and replace it.(Only for the UV lamp that have the same name, brand and power).Both inside and outside of the casing should be cleaned .(PIC C)
 - Loose the four screws by screwdriver. (PIC D)
 - Take out the brackets according to the direction of arrow. (PIC E)
 - Take out the quartz glass tube according to the direction of arrow. (PIC F)
 - Check the quartz glass tube and clean it with clean and wet cloth. (Please use vinegar to clean the quartz glass tube if there is much incrustation.) (PIC F)

INFORMATION

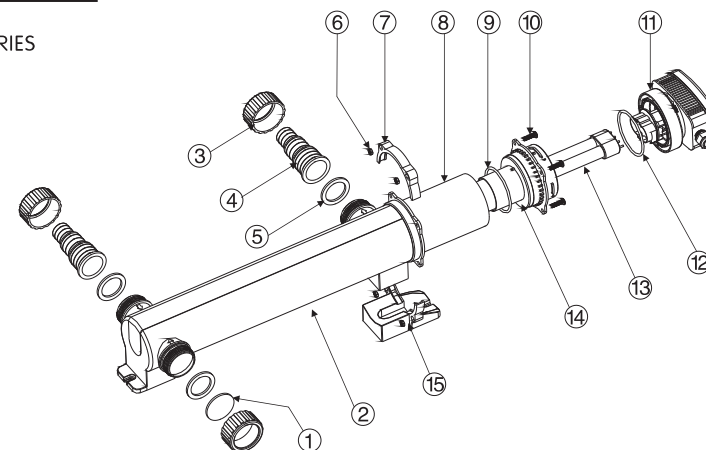
Trouble shooting	Cause	Remedy
Cloudywater	UVC Lamp dose not light up	Check electrical connection
	Cleaning quartz glass tube soiled	Cleaning
	Incorrect pump flow rate(unit)	See installation
	Brown suspended material, deposits at the bottom	Remove alga and leaves, prevent the ingress of dirt

INFORMATION

MODEL	UV-C (W)	CAPACITY (L)	MAX PRESSURE (bar)	THROUGH FLOW (L/h)	INLET&OUTLET ADAPTER	CABLE LENGTH (m)	LENGTH (mm)
CUV-318	18	25000	1.0	3000	1"~1 $\frac{1}{4}$ "~1 $\frac{1}{2}$ "~2"	5	355
CUV-324	24	45000	1.0	5000	1"~1 $\frac{1}{4}$ "~1 $\frac{1}{2}$ "~2"	5	545
CUV-336	36	55000	1.0	7000	1"~1 $\frac{1}{4}$ "~1 $\frac{1}{2}$ "~2"	5	545
CUV-515	15	25000	1.0	3000	1"~2"	5	445
CUV-528	28	45000	1.0	5000	1"~2"	5	692
CUV-540	40	60000	1.0	7000	1"~2"	5	990
CUV-618	18	25000	1.0	3000	1"~1 $\frac{1}{4}$ "~1 $\frac{1}{2}$ "~2"	5	445
CUV-624	24	40000	1.0	5000	1"~1 $\frac{1}{4}$ "~1 $\frac{1}{2}$ "~2"	5	445
CUV-636	36	55000	1.0	7000	1"~1 $\frac{1}{4}$ "~1 $\frac{1}{2}$ "~2"	5	550
CUV-655	55	65000	1.0	8000	1"~1 $\frac{1}{4}$ "~1 $\frac{1}{2}$ "~2"	5	690
CUV-672	2x36	90000	1.0	8000	1"~1 $\frac{1}{4}$ "~1 $\frac{1}{2}$ "~2"	2x5	1030
CUV-695	95	100000	1.0	8000	1"~1 $\frac{1}{4}$ "~1 $\frac{1}{2}$ "~2"	5	690
CUV-6110	2x55	120000	1.0	8000	1"~1 $\frac{1}{4}$ "~1 $\frac{1}{2}$ "~2"	2x5	1310

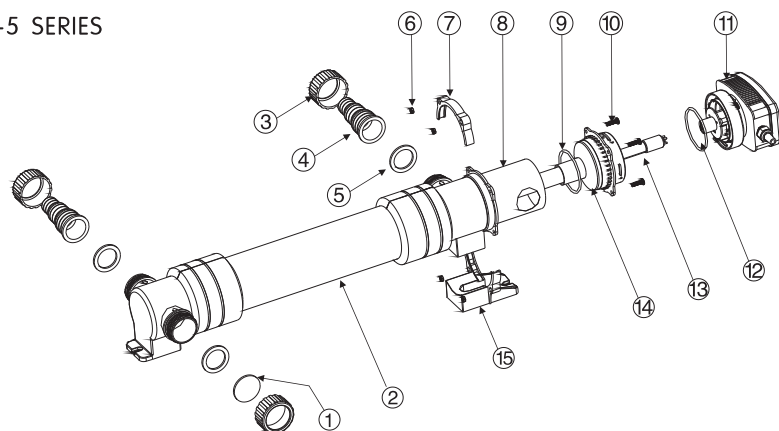
PART LIST

CUV-3 SERIES



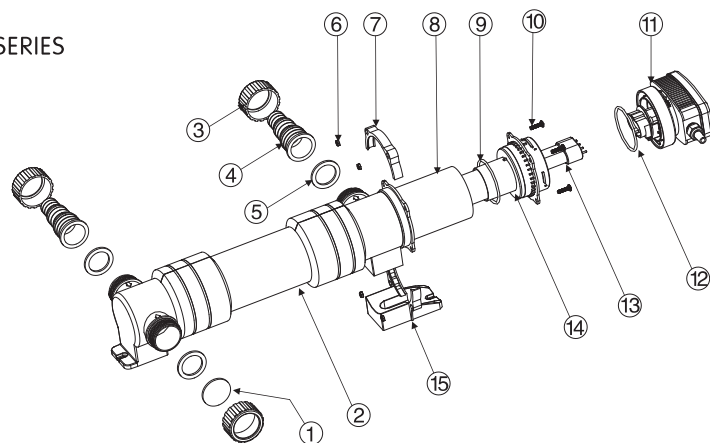
1	Indicator glass	2	Body shell	3	Nut 1 $\frac{1}{2}$ "
4	Outlet	5	Gasket	6	Nut
7	Upper bracket	8	Stainless steel hose	9	O ring 1
10	Screw	11	Uvc device head	12	O ring 2
13	UV lamp	14	Quartz glass part	15	Base

CUV-5 SERIES



1	Indicator glass	2	Body shell	3	Nut 1 $\frac{1}{2}$ "
4	Outlet	5	Gasket	6	Nut
7	Upper bracket	8	Stainless steel hose	9	O ring 1
10	Screw 1	11	Uvc device head	12	O ring 2
13	UV lamp	14	Quartz glass part	15	Base

CUV-6 SERIES



1	Indicator glass	2	Body shell	3	Nut 1 $\frac{1}{2}$ "
4	Outlet	5	Gasket	6	Nut
7	Upper bracket	8	Stainless steel hose	9	O ring 1
10	Screw 1	11	Uvc device head	12	O ring 2
13	UV lamp	14	Quartz glass part	15	Base

Warranty Registration Form

You Must Fill In All For Warranty Validation

WARRANTY CARD

Model No.			Date of purchase		
User			Address		
Zipcode		Phone		Contact person	
Retailer					
Maintenance Records					
Y M D					

Note: This warranty card is for further quality information from you and timely service from our company.

- 1、This card is to ensure quality service for product of our company.
- 2、The warranty term is 1 year, valid from the date of purchase filled on this card.
- 3、The damage caused by incorrect use or the contrived will be exempted.

WARRANTY CARD (leaf For Retailer)

Model No.			Date of purchase		
User			Address		
Zipcode		Phone		Contact person	
Retailer					